

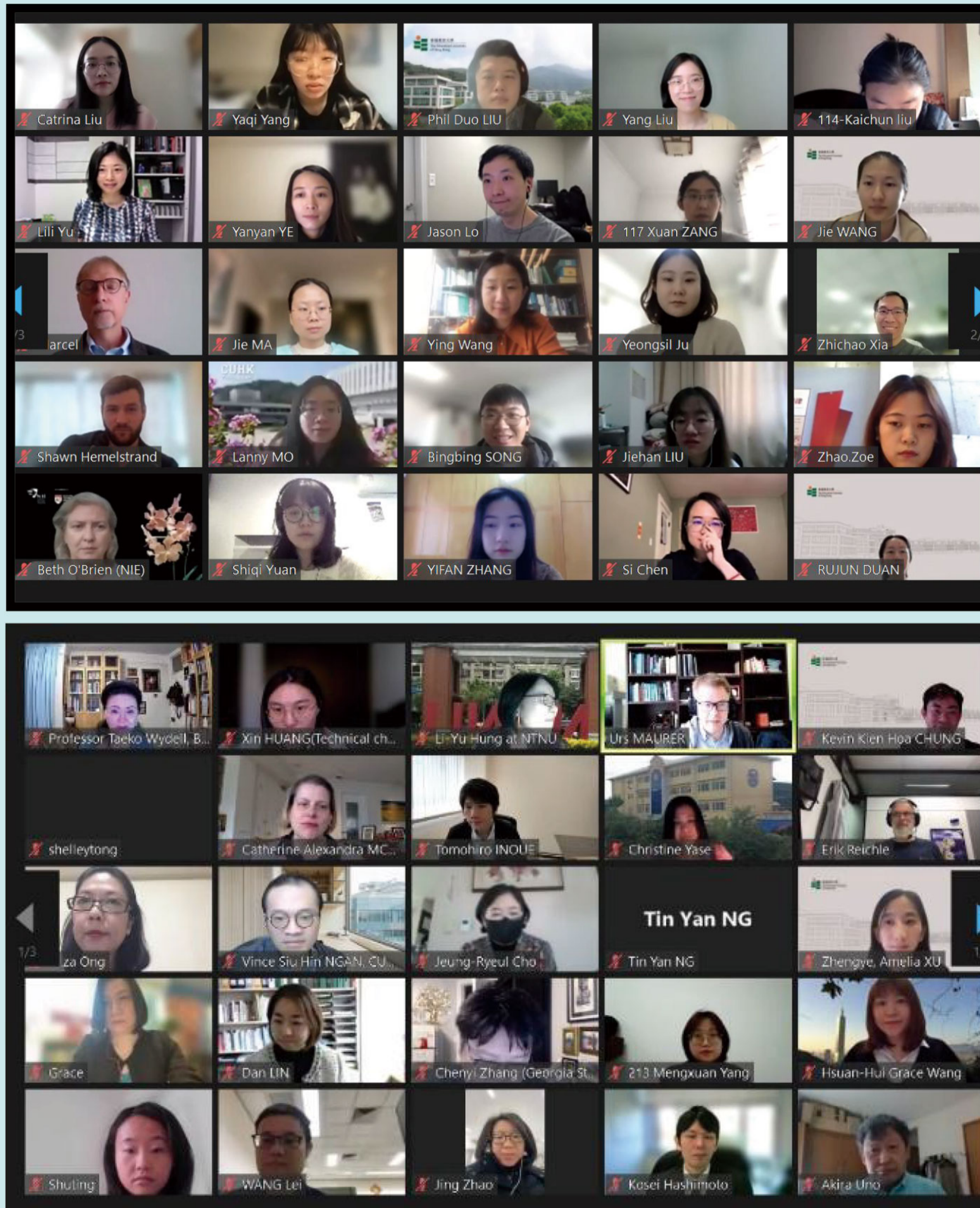
2022 NEWSLETTER

Association for Reading and Writing in Asia

- Highlights from ARWA 2022 Conference ——1-3
- ARWA 2022 Career Awards ——4-5
- ARWA 2022 Student Scholarship ——5
- Conference Special Issue in Reading and Writing ——6
- The Seventh Annual Conference Announcement ——7
- The Eighth Annual Conference: Advance Notice ——8
- Host an Annual Conference and Membership——9

Highlights from ARWA 2022 Conference

The 6th ARWA Conference was held online from Hong Kong on February 24/25, 2022. There were 4 keynote lectures and 108 presentations from 15 different countries. There were 66 oral presentations, 34 oral presentations, and 8 talks that were part of 2 symposia. Over 160 people were registered for the conference and participated in this annual event. We thank Professor Urs Maurer and his team for organizing the conference during the COVID 19 period.



ARWA Association for Reading and Writing in Asia

Symposium 1A:
Reading and child language development in rural China

Chair: Si Chen 陈思
Harvard Graduate School of Education
February 24, 2022

CEREC COLLABORATIVE FOR EARLY RURAL EDUCATION IN CHINA SNOW LAB IN HARVARD

Parental Pedagogical Beliefs

- Parents hold pedagogical beliefs that guide them while interacting with their children (Bruner, 1971)
- According to their beliefs, parents select the activities and materials that they consider suitable for their children
- By making such choices, parents support children's development (Rogoff, 1990)
- Seeing the importance of involvement in children's development, is associated with the extent of home learning activities with the child (e.g., homework assignments)
- Mothers who believe that their children's learning is related to the frequency and nature of literacy interactions, provide richer environment and support, tailored to their child's abilities (Machida et al., 2002)

In the third keynote lecture (delivered after the conference), Fumiko Hoefft talked about neural mechanisms that underlie dyslexia and about socio-emotional and cognitive processes that are important for compensation and resilience in dealing with dyslexia.

"neural signatures" are already seen in beginning readers

LOW RISK PREREADERS

HIGH RISK (w DYS FAMILY MEMBERS) PREREADERS

Vandermosten Hoefft Norton. *Curr Opin Beh Sci.* '16; Hosseini ... Hoefft. *NeuroImage* '13; Black ... Hoefft. *NeuroImage* '12

Jessica Black Hadi Hosseini Madike Vandermosten NIH K23HD054720 ('08-'13) R01HD078351 ('15-'20) @FumikoHoefft UCONN 2022-03-13 16:03:52

In the last keynote lecture, Merav Ahissar presented a statistical learning theory based on behavioural and neuroscience data that can account for some symptoms in developmental disorders, such as dyslexia and autism.

Successful skill acquisition

Practice with either perceptual or cognitive tasks leads to a transition

High-level: cognitive

low-level: perceptual

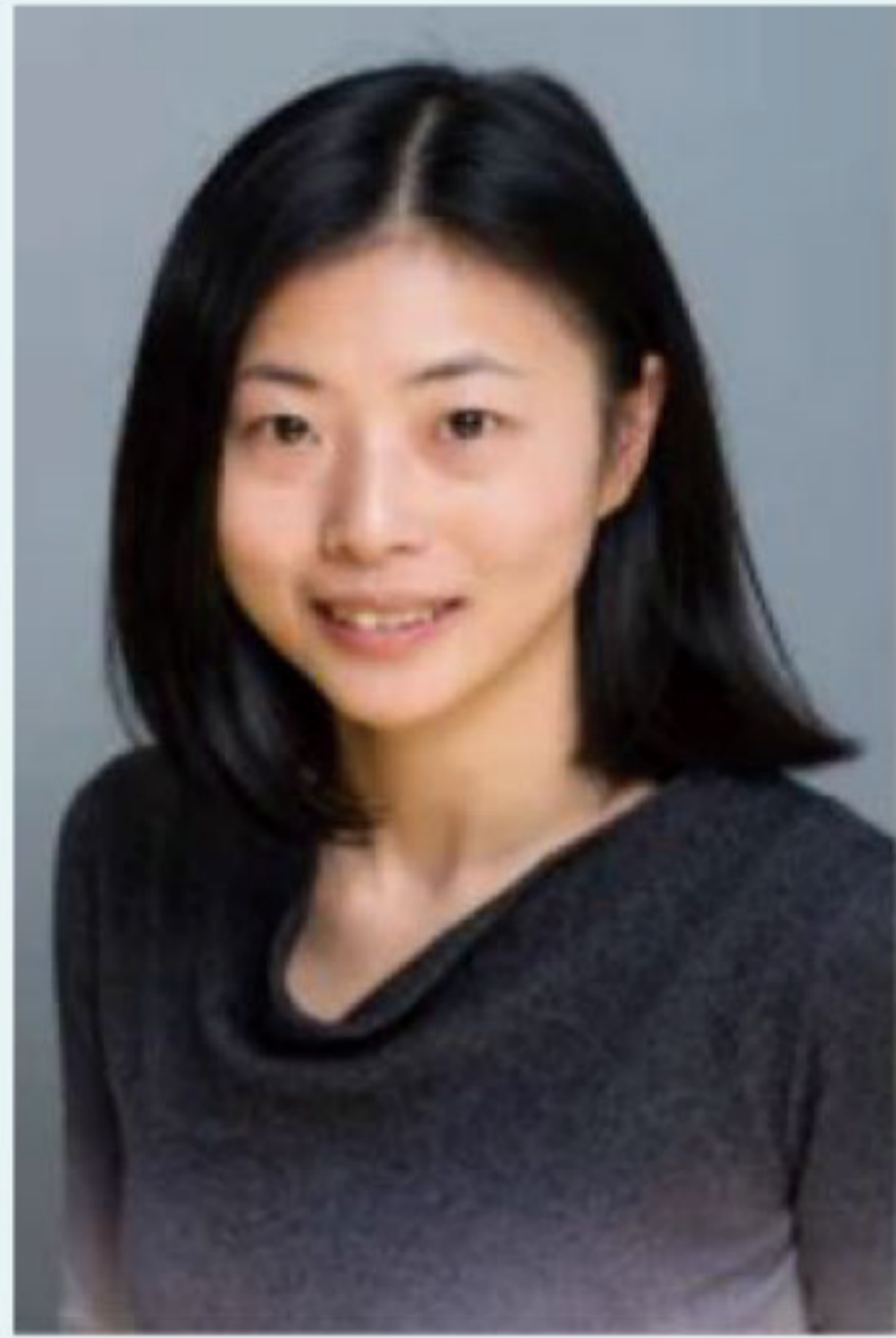
Frontal lobe

prefrontal lobes pre-motor cortex motor cortex

ARWA 2022 Career Awards

Congratulations to the following three participants for winning the career awards for the ARWA 2022 conference!

ARWA Early Career Award



Lili Yu (AUS)

Dr. Lili Yu is a lecturer in the School of Psychological Sciences at Macquarie University. Her research uses experimental approaches and a wide range of methodologies (e.g., eye-tracking) to understand the coordination of perceptual and cognitive processes (e.g., vision, attention, memory, language processing) underlying natural reading. She is particularly interested in understanding whether and how various writing systems influence readers' reading behaviours differently.

ARWA Mid-Career Award



Dan Lin (HK)

Dr. Dan Lin is an Associate Professor at the department of Psychology in the Education University of Hong Kong. Her research focuses on reading and writing development, language and learning, reading comprehension, and digital literacy. Some of her works have published in prestigious journals such as Psychological Science, Developmental Science, Journal of Educational Psychology, Learning and Instruction. She also serves in the editorial board and/or reviews for 15+ professional journals.



Phil Duo Liu (HK)

Dr. Duo Liu is an Associate Professor in the Department of Special Education and Counselling, at the Education University of Hong Kong. He got his PhD from the Department of Psychology, the Chinese University of Hong Kong. His research mainly focuses on language and literacy development and related difficulties. He explores the associations of morphological awareness and visual attention with reading in Chinese. He is also interested in investigating the roles of factors beyond the cognitive domain (e.g., psychological and ecological ones) in predicting reading outcomes. At the same time, he is keen on linking the research work with practice. He has developed several computer game packages for assessing and training children's learning-related abilities. He is an associate editor of Journal of Learning Disabilities, and an editorial board member of Reading and Writing.

ARWA Career Awards Application

The ARWA early career award aims to recognize a talented early-career researcher who shows outstanding research potential in an area of reading and writing research that is related to Asia. The award winner will receive a 2000HKD (about 255USD) cash prize and a certificate.

The ARWA mid-career award aims at recognizing a researcher who is currently in the middle of his/her career (approximately associate professor level or equivalent) and who has a distinguished research record in the area of literacy acquisition that is related to Asia in particular or more generally to cross-linguistic / cross-scriptal literacy acquisition.

Nominations will be elected by the ARWA Awards Committee based on scientific merit. ARWA is committed to supporting and promoting equality, diversity, and inclusion. The award recipient must be approved by the ARWA Board members based upon recommendation of the Awards Committee. The decision of the Board is final.

Nominations should be sent to the ARWA secretary (Prof. LI Su, lis@psych.ac.cn) by Sep 1 each year.

Please visit our web site for more details: <https://www.arwasia.org/about-5>.

ARWA 2022 Student Awards

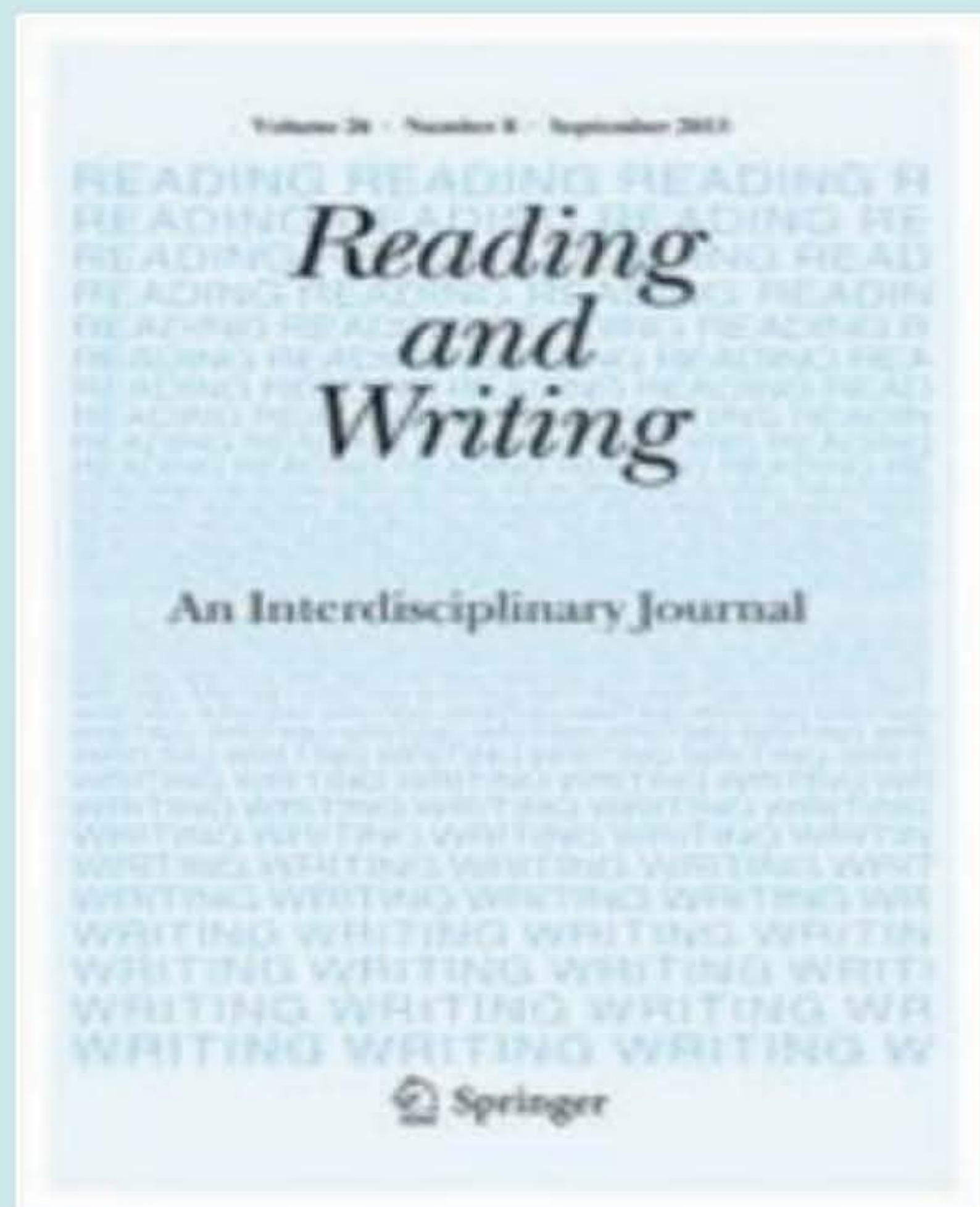
Congratulations to the following three participants for winning the student scholarships for the ARWA 2022 conference!

Tian Jiang (HK): “From Faces to Chinese Characters: Analytic v.s. Holistic Processing in Chinese and Non-Chinese Readers.”

Lei Wang (HK): “The effect of distal environmental factors on character reading in Chinese lower grade students.”

Yang Liu (NZ): “The contributions of working memory and vocabulary in inference making among Chinese fifth and sixth graders.”

Conference Special Issue in Reading and Writing



Volume 35, issue 4, April 2022

Special Issue: ARWA 2020

Issue editor
Poh Wee Koh

11 articles in this issue

Introduction to the 2020 special issue for the Association for Reading and Writing in Asia (ARWA)

Poh Wee Koh

EditorialNotes | Published: 12 March 2022 | Pages: 797 - 801

As for previous conferences, there will be an ARWA 2022 Special Issue in the journal “Reading and Writing: An Interdisciplinary Journal”. The journal is accepting submissions to the ARWA 2022 special issue and the deadline for submission is now **May 1, 2022**.

The link to submit to the journal is <https://www.editorialmanager.com/read/default.aspx> where you will be requested to first enter your login details (or register an account if it is your first time submitting to the journal). To submit and ensure that the manuscript goes to the special issue, please select "SI: ARWA 2022" in the dropdown list for "Article Type" on the first page after you click "submit a new manuscript". You can then proceed to submit the manuscript as per instructions provided in the submission site. You may also wish to refer to the link <https://www.springer.com/journal/11145/submission-guidelines?IFA> for the submission guidelines before submitting.

Junior and/or student researchers who are interested to gain experience and recognition in reviewing, please contact Dr. Poh Wee Koh at pohwee.koh@gmail.com, who will provide a short virtual workshop on Zoom about review-ing for Reading and Writing for those who might find it helpful. Please consider contributing to the journal as a reviewer.

The Seventh Annual Conference Announcement ARWA to stage the 2023 conference in Vietnam

Welcome- chào đón, Hanoi is the capital city of Vietnam. In February, Hanoi is normally dry and bright weather and is the best months to visit the north-ern part of Vietnam. It is a very safe city and easy to get around. For more information about Vietnam, refer to this website <https://vietnam.travel/home>.



Conference Venue

- 25km/30-minute drive from Noi Bai International Airport
- within walking distance to downtown Hanoi
- well-equipped venues for meetings and events
- restaurants, bars, recreation facilities
- special room rates for conference participants

PAN PACIFIC
HANOI

*1 Thanh Nien Road
Ba Dinh District
10000 Hanoi Vietnam*

As ARWA is shaping up the most exciting event there – we are pleased to announce that the 7th ARWA Conference will be held on 23-24 February 2023 at the 5 Star Pan Pacific Hotel in Hanoi, Vietnam!

<https://www.panpacific.com/en/hotels-and-resorts/pp-hanoi.html>.

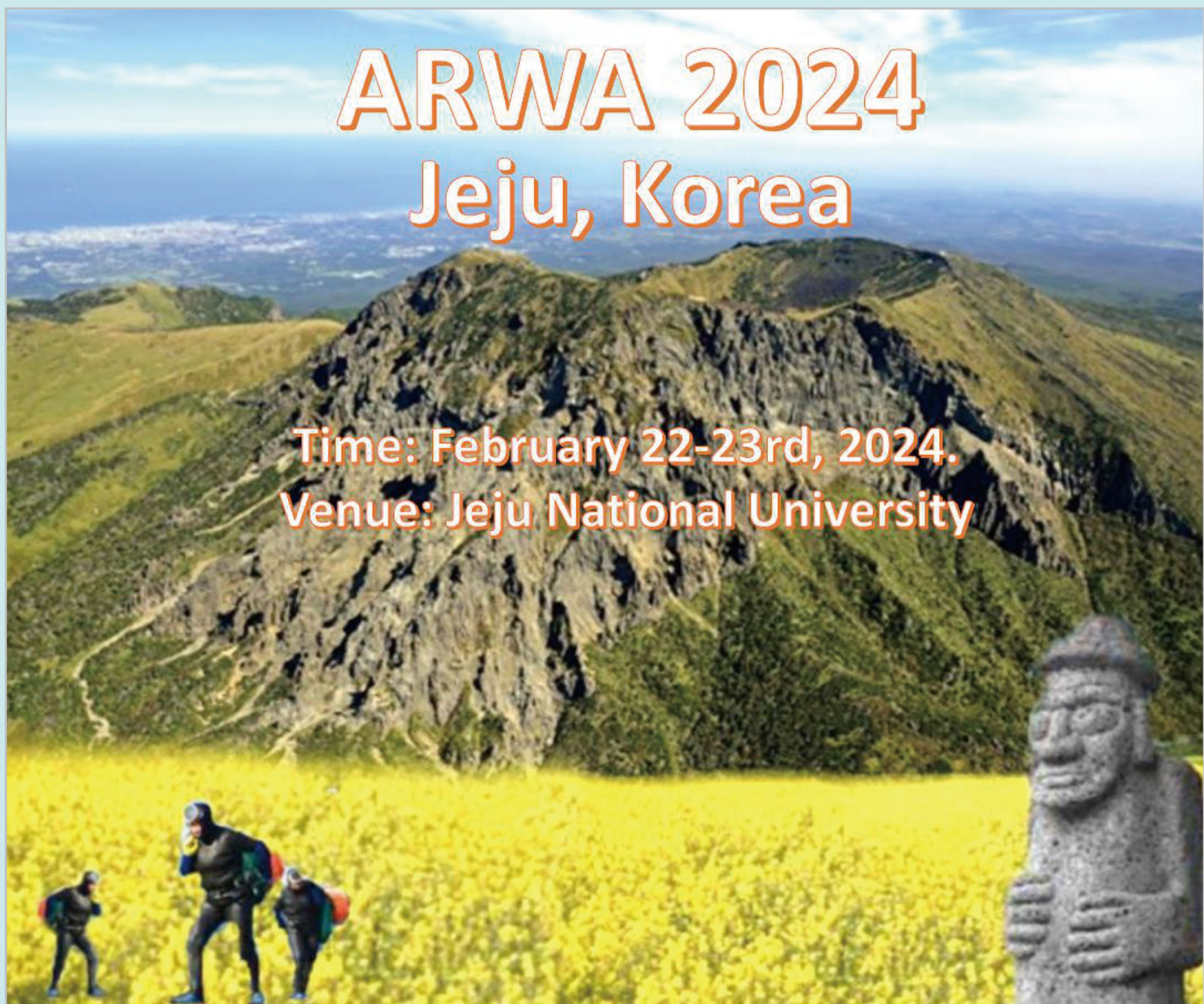
Since the inauguration in 2016, ARWA has been hosting yearly conferences at different regions for like-minded individuals to interact and synergize. ARWA Conference has grown to be a thriving hub for research and development in reading and writing, where expertise and innovation bloom. We hope that the pandemic will continue playing out and lockdowns will be eased soon. We will put together an exciting programme for the 2023 conference that involves many influential researchers and practitioners around the globe, and provides opportunities for academic discourse and professional collaboration.

Save the dates and stay tuned for details about the 2023 Hanoi conference and the hotel accommodate rates on the ARWA website! We look forward to seeing you in 2023! Thank you-cảm ơn.

The Eighth Annual Conference: Advance Notice

We are happy to announce the ARWA 2024 conference to be held in Jeju island, Korea. The time will be February 22nd and 23rd, 2024. The place will be Jeju National University. Local organizers are Prof. Jeung-Ryeul Cho at Kyungnam University, Prof. Sung Jun Joo at Busan National University, and Prof. Hongoak Yun at Jeju National University.

Jeju island is an hour's flight from Seoul. It is the best vacation area in Korea. As you can see in the middle of the picture, Jeju has the highest Mt. Halla in South Korea. It is a volcano, but it is not active now. There are three famous things in Jeju: wind, woman and stone. The bottom right is a stone statue made of volcano stones, and the left is female divers. The yellow canola flowers you can see in the picture bloom in early spring. We hope you all visit Jeju in ARWA 2024. Thank you.



Host an ARWA Annual Conference

Founded in 2016, ARWA exists to advance education by promoting the scientific study of reading and writing, as well as to understand related areas such as language and literacy.

A major way in which ARWA fulfils these objectives is by holding and/or organizing conferences. In particular, the Society sets great store by its annual conference. Since the first conference in 2017, attendance has grown and the influence of the Annual Conference is evident. ARWA now is seeking interested members to host the 9th (2025) and the 10th conference (2026). Your participation will greatly enhance the visibility of the Society and your research organizations!

For detailed information on how to host an Annual Conference, please contact arwaenquiry@gmail.com.

Become a part of us now !

Fees of yearly membership (covers registration fees for the annual conference):

US\$ 100 Regular member

US\$ 80 Student member

We are happy to announce that 50% off special pricing is available for lower-to-middle income economies, as defined by the World Bank.

Please register at our website: www.arwasia.org and help us spread the word to your colleagues!

ARWA discussion mailing list

To communicate with fellow members in ARWA, you can use the ARWA discussion mailing list (Arwa-discussion@psy.cuhk.edu.hk). It works like normal email, but instead of one recipient, all ARWA members will receive your email if you send/reply it to the Arwadiscussion@psy.cuhk.edu.hk. All ARWA members have automatically subscribed to this mailing list, and you can also unsubscribe at any time by going to <https://mail.psy.cuhk.edu.hk/mailman/listinfo/arwa-discussion>.

